



Attendance Policy

Crooks Barn Primary School

Reviewed by:	Chris Twiby/Nicola Wilkes	Date: 14/01/26
Last reviewed on:	14/01/26	
Next review due by:	14/01/27	

Contents

1. Aims	3
2. Roles and Responsibilities	3
3. Recording attendance.....	4
4. Authorised and unauthorised absence	6
5. Strategies for promoting attendance	7
6. Attendance monitoring.....	7
7. Monitoring arrangements.....	9
8. Support	9
9. Links with other policies.....	9
10. Legislation and guidance	9
Appendix 1: attendance codes	10

1. Aims

We are committed to meeting our obligation with regards to school attendance through our whole school approach that values good school attendance, including:

- Promoting good attendance
- Ensuring every child has access to full time education
- Building and maintaining a strong relationship with families to enable targeted support to better school attendance
- Reducing absence, including persistent and severe absence
- Acting early to address patterns of absence
- Promoting the importance of arriving to school and lessons on time to support punctuality

2. Roles and Responsibilities

2.1 The Governing Board or Trustees

The governing board is responsible for:

- Promoting the importance of school attendance across the school's policies and ethos
- Making sure school leaders fulfil expectations and statutory duties
- Regularly reviewing and challenging attendance data
- Monitoring attendance figures for the whole school
- Making sure staff receive adequate training on attendance
- Holding the headteacher to account for the implementation of this policy

2.2 The headteacher

The headteacher is responsible for:

- Implementation of this policy at the school
- Monitoring school-level absence data and reporting it to governors
- Supporting staff with monitoring the attendance of individual pupils
- Monitoring the impact of any implemented attendance strategies
- Issuing fixed-penalty notices, where necessary

2.3 The designated senior leader responsible for attendance

The designated senior leader is responsible for:

- Leading attendance across the school
- Offering a clear vision for attendance improvement
- Evaluating and monitoring expectations and processes
- Having an oversight of data analysis
- Devising specific strategies to address areas of poor attendance identified through data
- Arranging calls and meetings with parents to discuss attendance issues

- The reason for the amendment
- The date on which the amendment was made

The name and position of the person who made the amendment

See appendix 1 for the DfE attendance codes.

We will also record:

- Whether the absence is authorised or not
- The nature of the activity if a pupil is attending an approved educational activity
- The nature of circumstances where a pupil is unable to attend due to exceptional circumstances

We will keep every entry on the attendance register for 3 years after the date on which the entry was made.

Pupils must arrive in school by their class entry time each school day. Ready for register which takes within 10 minutes.

3.2 Unplanned absence

The pupil's parent/carer must notify the school of the reason for the absence on the first day of an unplanned absence by 9am or as soon as practically possible by calling the school admin staff (see also section 7).

01642 521750

We will mark absence due to illness as authorised unless the school has a genuine concern about the authenticity of the illness.

If the authenticity of the illness is in doubt, the school may ask the pupil's parent/carer to provide medical evidence, such as a doctor's note, prescription, appointment card or other appropriate form of evidence. We will not ask for medical evidence unnecessarily.

If the school is not satisfied with the authenticity of the illness, the absence will be recorded as unauthorised and parents/carers will be notified of this in advance.

3.3 Planned absence

Attending a medical or dental appointment will be counted as authorised if the pupil's parent/carer notifies the school in advance of the appointment.

Please provide a copy of the appointment to our admin staff who will take a copy and add it to the child's file.

However, we encourage parents/carers to make medical and dental appointments out of school hours where possible. Where this is not possible, the pupil should be out of school for the minimum amount of time necessary.

The pupil's parent/carer must also apply for other types of term-time absence as far in advance as possible of the requested absence. Go to section 5 to find out which term-time absences the school can authorise.

3.4 Lateness and punctuality

A pupil who arrives late:

- Before the register has closed will be marked as late, using the appropriate code L
- After the register has closed but before 9:25, using the appropriate code L
- After 09:25am using the appropriate code U

3.5 Following up unexplained absence.

Where any pupil we expect to attend school does not attend, or stops attending, without reason, the school will:

- Call the pupil's parent/carer on the morning of the first day of unexplained absence to ascertain the reason. If the school cannot reach any of the pupils' emergency contacts, the school may make a home visit. If the school are concerned as to the whereabouts and cannot contact parents/carers they may contact the police.
- Identify whether the absence is approved or not
- Identify the correct attendance code to use and input it as soon as the reason for absence is ascertained – this will be no later than 5 working days after the session
- Call the parent/carer on each day that the absence continues without explanation to ensure proper safeguarding action is taken where necessary. If absence continues, the school will consider involving an education welfare officer

3.6 Reporting to parents/carers

The school will regularly inform parents about their child's attendance and absence levels in their termly reports. Though this may be sooner if there are attendance concerns.

4. Authorised and unauthorised absence

4.1 Approval for term-time absence

The headteacher will only grant a leave of absence to a pupil during term time if they consider there to be 'exceptional circumstances'. A leave of absence is granted at the headteacher's discretion, including the length of time the pupil is authorised to be absent for.

The school considers each application for term-time absence individually, considering the specific facts, circumstances, and relevant context behind the request.

Any request should be submitted as soon as it is anticipated and, where possible, at least 4 weeks before the absence, and in accordance with any leave of absence request form, accessible via the school admin office. The headteacher may require evidence to support any request for leave of absence.

Valid reasons for **authorised absence** include:

- Illness and medical/dental appointments.
- Religious observance – where the day is exclusively set apart for religious observance by the religious body to which the pupil's parents belong. If necessary, the school will seek advice from the parents' religious body to confirm whether the day is set apart.
- Attendance of a parent/grandparent wedding / graduation.
- Sporting events where we are given proof of event.

4.2 Extended Leave

When a child is absent from school for an extended period (i.e. 15 school days or more) parent/carer should advise the school of the temporary address

4.3 Legal sanctions

The school or local authority can fine parents for the unauthorised absence of their child from school, where the child is of compulsory school age.

If issued with a fine, or penalty notice, each parent must pay £60 within 21 days or £120 within 28 days. The payment must be made directly to the local authority. The school do not receive the fine.

Penalty notices can be issued by a headteacher local authority officer or the police.

The decision on whether to issue a penalty notice may take into account:

- The number of unauthorised absences occurring within a rolling academic year
- One-off instances of irregular attendance, such as holidays taken in term time without permission
- Where an excluded pupil is found in a public place during school hours without a justifiable reason

If the payment has not been made after 28 days, the local authority can decide whether to prosecute or withdraw the notice.

5. Strategies for promoting attendance

At Crooksbarrow primary we reward excellent/good attendance. In the past we have rewarded 100% attendance, however we have moved away from this model as we felt that some children were not able to be considered due to reasons beyond their control, such as illness, medical conditions or other authorised absences. Because of this, we now reward classes and also those children who have maybe made an improvement or attend well consistently. For example, we hold a prize draw on the last day of half term to show this. We also reward classes with a half termly trophy for good attendance.

6. Attendance monitoring

Our registers are analysed weekly to identify pupils that require support with their attendance. We may also identify when to alert parents/carers of a particular illness within school. E.G. an outbreak of chicken pox or measles.

6.1 Monitoring attendance.

The school will:

- Monitor attendance and absence data weekly, half-termly, termly and yearly across the school and at an individual pupil level.
- Identify whether there are particular groups of children whose absences may be a cause for concern.

Pupil-level absence data will be collected each term and published at national and local authority level through the DfE's school absence national statistics releases. The underlying school-level absence data is published alongside the national statistics. The school will compare attendance data to the national average and share this with the governing board.

6.2 Analysing attendance.

The school will:

- Analyse attendance and absence data regularly to identify pupils or cohorts that need additional support with their attendance and use this analysis to provide targeted support to these pupils and their families.
- Look at historic and emerging patterns of attendance and absence, and then develop strategies to address these patterns.

6.3 Using data to improve attendance.

The school will:

- Provide regular attendance reports to class teachers, and other school leaders, to facilitate discussions with pupils and families.
- Use data to monitor and evaluate the impact of any interventions put in place to modify them and inform future strategies.

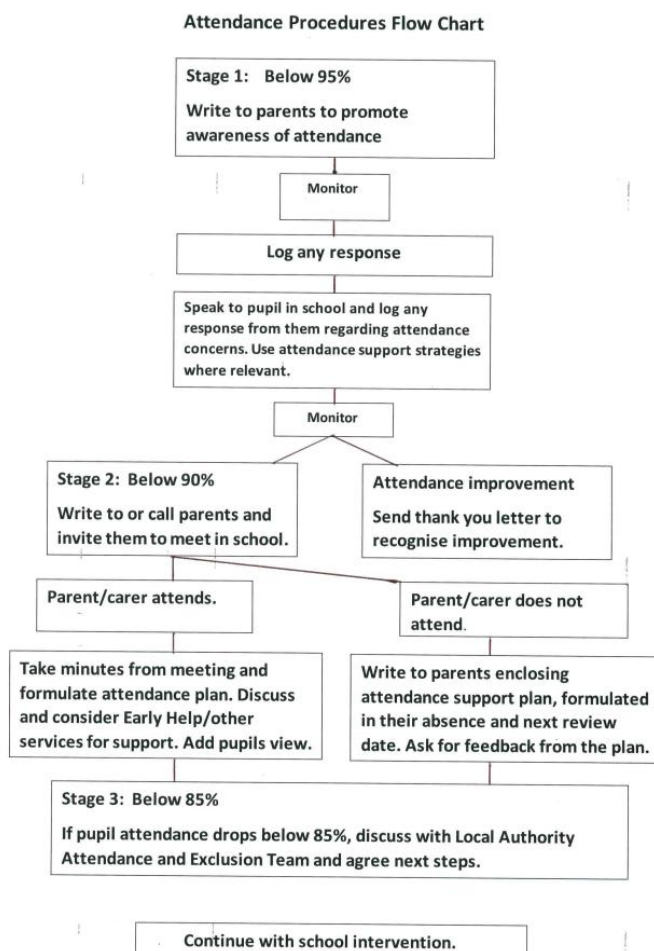
6.4 Reducing persistent and severe absence.

Persistent absence is where a pupil misses 10% or more of school, and severe absence is where a pupil misses 50% or more of school.

The school will:

- Use attendance data to find patterns and trends of persistent and severe absence.
- Hold regular meetings with the parents of pupils who the school (and/or local authority) considers to be vulnerable, or are persistently or severely absent, to discuss attendance and engagement at school.
- Provide access to wider support services to remove the barriers to attendance.

Follow the school procedures as follows:



7. Monitoring arrangements

This policy will be reviewed as guidance from the local authority or DfE is updated, and as a minimum annually by Chris Twiby Headteacher. At every review, the policy will be approved by the full governing board.

8. Support

The school will:

- Build relationships with students and families to encourage regular school attendance.
- Analyse and use data and relationship knowledge to prevent regular absence.
- Using resources (School based and external services) to intervene early with support.
- Use targeted support for persistent/severe absences.

9. Links with other policies

This policy links to the following policies:

- Child protection and safeguarding policy
- Behaviour policy

10. Legislation and guidance

This policy meets the requirements of the [working together to improve school attendance](#) from the Department for Education (DfE), and refers to the DfE's statutory guidance on [school attendance parental responsibility measures](#). These documents are drawn from the following legislation setting out the legal powers and duties that govern school attendance:

- Part 6 of [The Education Act 1996](#)
- Part 3 of [The Education Act 2002](#)
- Part 7 of [The Education and Inspections Act 2006](#)
- [The Education \(Pupil Registration\) \(England\) Regulations 2006 \(and 2010, 2011, 2013, 2016 amendments\)](#)
- [The Education \(Penalty Notices\) \(England\) \(Amendment\) Regulations 2013](#)

This policy also refers to the DfE's guidance on the [school census](#), which explains the persistent absence threshold

- [Summary of responsibilities where a mental health issue is affecting attendance](#)
- [Support for pupils where mental health issue is affecting attendance \(Effective practice examples\)](#)
- [Keeping Children Safe in Education 2023](#)

Appendix 1: attendance codes

The following codes are taken from the DfE's guidance on school attendance.

Code	Definition	Scenario
/	Present (am)	Pupil is present at morning registration
\	Present (pm)	Pupil is present at afternoon registration
L	Late arrival	Pupil arrives late before register has closed
B	Off-site educational activity	Pupil is at a supervised off-site educational activity approved by the school
D	Dual registered	Pupil is attending a session at another setting where they are also registered
J	Interview	Pupil has an interview with a prospective employer/educational establishment
P	Sporting activity	Pupil is participating in a supervised sporting activity approved by the school
V	Educational trip or visit	Pupil is on an educational visit/trip organised, or approved, by the school
W	Work experience	Pupil is on a work experience placement

Code	Definition	Scenario
Authorised absence		
C	Authorised leave of absence	Pupil has been granted a leave of absence due to exceptional circumstances
E	Excluded	Pupil has been excluded but no alternative provision has been made
H	Authorised holiday	Pupil has been allowed to go on holiday due to exceptional circumstances
I	Illness	School has been notified that a pupil will be absent due to illness
M	Medical/dental appointment	Pupil is at a medical or dental appointment
R	Religious observance	Pupil is taking part in a day of religious observance
S	Study leave	Year 11 pupil is on study leave during their public examinations
T	Gypsy, Roma and traveller absence	Pupil from a traveller community is travelling, as agreed with the school
Unauthorised absence		
G	Unauthorised holiday	Pupil is on a holiday that was not approved by the school
N	Reason not provided	Pupil is absent for an unknown reason (this code should be amended when the reason emerges, or replaced with code O if no reason for absence has been provided after a reasonable amount of time)

O	Unauthorised absence	School is not satisfied with reason for pupil's absence
U	Arrival after registration	Pupil arrived at school after the register closed

Code	Definition	Scenario
X	Not required to be in school	Pupil of non-compulsory school age is not required to attend
Y	Unable to attend due to exceptional circumstances	School site is closed, there is disruption to travel as a result of a local/national emergency, or pupil is in custody
Z	Pupil not on admission register	Register set up but pupil has not yet joined the school
#	Planned school closure	Whole or partial school closure due to half-term/bank holiday/INSET day